



Welcome to Northern Livestock Sales of Lloydminster

Select Heifer Sale, Saturday Dec 9th at 1PM

M.C. Quantock of Lloydminster

See attached supplement for breakdown on heifers and cows.

PEN	HD#	DESCRIPTION	KIND	WEIGHT	PRICE & BUYER
1-1	7	BLACK PURE BRED 2ND CALVER BRED TO PURE BRED ANGUS	COW		
1-1A	6	BLACK PURE BRED 2ND CALVER BRED TO PURE BRED ANGUS	COW		
1-3	5	BLACK PURE BRED 2ND CALVER BRED TO PURE BRED ANGUS	COW		
1-3A	5	BLACK PURE BRED 2ND CALVER BRED TO PURE BRED ANGUS	COW		
A-1	9	BLACK 2ND - 4TH CALVERS	COW		
A-1A	9	BLACK 2ND - 4TH CALVERS	COW		
C-1	8	BLACK 3RD - 4TH CALVERS	COW		
C-1A	7	BLACK 3RD - 4TH CALVERS	COW		
D-1	8	BLACK 2ND - 4TH CALVERS	COW		
D-1A	8	BLACK 2ND - 4TH CALVERS	COW		
G-4	6	BLACK 4TH - 5TH CALVERS	COW		
T-4	8	RED 3RD - 4TH CALVERS	COW		
T-4A	8	RED 3RD - 4TH CALVERS	COW		
T-3	6	RED 2ND - 3RD CALVERS	COW		
T-3A	5	RED 2ND - 3RD CALVERS	COW		
T-7	8	RED 3RD - 4TH CALVERS	COW		
T-7A	7	RED 3RD - 4TH CALVERS	COW		
T-6	5	RED 3RD - 4TH CALVERS	COW		
T-5	7	RED 4TH - 5TH CALVERS	COW		
1-15	4	RED 4TH - 5TH CALVERS	COW		
RED PURE BREDS					
1-13	6	RED P.B.S 2ND - 3RD CALVER	COW		
1-11	6	RED P.B.S 2ND - 3RD CALVER	COW		
SUPER SISTERS - BRED HEIFERS - ALL HOME RAISED					
1-2	5	RED BLAZE - SUPER BALDIES	HEIFER	1200	
1-4	7	RED BALDIE- SUPER BALDIES	HEIFER	1100	
1-6	4	RED STAR - SUPER BALDIES	HEIFER	1130	
1-8	6	RED STAR FACE - SUPER BALDIES	HEIFER	1060	
1-10	4	RED BROCKLES- SUPER BALDIES	HEIFER	1110	
1-10A	2	RWF BALDIE- SUPER BALDIES	HEIFER	1080	
1-12	11	RED SIMM- SUPER BALDIES	HEIFER	1160	
1-14	12	RED SIMM- SUPER BALDIES	HEIFER	1060	
1-16	5	RED SIMM- SUPER BALDIES	HEIFER	1090	
1-16A	4	RED GELBVIEWH - SUPER GUPPIES	HEIFER	1090	
1-16B	4	RED GELBVIEWH - SUPER GUPPIES	HEIFER	1090	
2-17	7	RED GELBVIEWH - SUPER GUPPIES	HEIFER	1147	
2-19	9	BLACK BLAZE - BLACK SUPER BALDIES	HEIFER	1120	
2-21	8	BLACK BLAZE - BLACK SUPER BALDIES	HEIFER	1160	

M.C. QUANTOCK CONTINUED

PEN	HD#	DESCRIPTION	KIND	WEIGHT	PRICE & BUYER
2-23	6	BLACK STAR - BLACK SUPER BALDIES	HEIFER	1160	
2-23A	5	BLACK STAR - BLACK SUPER BALDIES	HEIFER	1110	
2-27	7	BLACK STAR - BLACK SUPER BALDIES	HEIFER	1090	
2-27A	2	BLACK WHITE FACE - BLACK SUPER BALDIES	HEIFER	1080	
3-6	11	BLACK X - BLACK SUPER BALDIES	HEIFER	1130	
BP2	9	BLACK X - BLACK SUPER BALDIES	HEIFER	1100	
BP2A	8	BLACK X - BLACK SUPER BALDIES	HEIFER	1100	
3-8	8	BLACK GELBVEIH - BLACK SUPER GUPPIES	HEIFER	1120	
3-8A	4	BLACK GELBVEIH - BLACK SUPER GUPPIES	HEIFER	1120	
F-1	6	RWF - H2	HEIFER	1240	
G-1	6	RWF - H2	HEIFER	1240	
G-3	3	RWF - H2	HEIFER	1300	

BLACK & RED PUREBRED HEIFERS

1-5	6	BLACK PURE BRED	HFR	1110	
1-5A	6	BLACK PURE BRED	HFR	1110	
1-7	6	BLACK PURE BRED	HFR	1060	
1-7A	5	BLACK PURE BRED	HFR	1060	
1-9	5	RED PURE BRED	HEIFER	1100	
1-9A	4	RED PURE BRED	HEIFER	1100	

Roach Ranching of Edam SK

Home raised heifer bred to Red Angus bulls, to start calving Feb 25th. Bulls out May 15th to July 11th. Heifer had Bovashield Gold FP5, Tasvax 8 Prebreeding.

PEN	HD#	DESCRIPTION	KIND	WEIGHT	PRICE & BUYER
1-17	5	DARK GOGGLES	HEIFER	1340	
1-19	5	DARK GOGGLES	HEIFER	1270	
1-21	8	DARK GOGGLES	HEIFER	1195	
1-18	6	RWF SIMM X	HEIFER	1300	
1-20	3	RWF GOGGLES	HEIFER	1240	
1-20A	3	RWF	HEIFER	1220	
1-22	4	RWF	HEIFER	1190	
1-24	5	RED BALDIES	HEIFER	1320	
1-23	6	RED STAR & BLAZES	HEIFER	1180	
1-26	4	RED SIMM	HEIFER	1260	
1-26A	2	RED SIMM (25E, 662)	HEIFER	1160	

Bar Crossroads Ranch of Edam SK

Home Raised heifers (except for 12), early calving heifers bred to Black Angus bulls, to start calving Feb 10th. Bulls out May 1st to June 20th.

PEN	HD#	DESCRIPTION	KIND	WEIGHT	PRICE & BUYER
2-1	7	RWF GOGGLES	HEIFER	1395	
2-3	4	RWF GOGGLES	HEIFER	1290	
2-5	10	RWF GOGGLES	HEIFER	1280	
2-7	6	RWF LIGHTER COLOR	HEIFER	1270	

Home raised heifers bred to Black Angus bulls, to start calving march 15th for 45 days. Bulls out June 8th to July 25th

2-9	11	RWF GOGGLE EYED	HEIFER	1160	
2-11	10	RWF GOGGLE DARK	HEIFER	1280	
2-13	8	RWF GOGGLES	HEIFER	1230	
2-15	12	RWF GOGGLES	HEIFER	1220	
2-6	6	RWF	HEIFER	1240	

2-8	8	RWF GOGGLES	HEIFER	1140
2-2	9	RWF	HEIFER	1280
2-4	8	RWF	HEIFER	1095
2-10	4	RED BALDIES	HEIFER	1100
2-12	8	BLACK BALDIES & BLAZES	HEIFER	1190
2-14	6	BLACK STAR FACE	HEIFER	1150
2-16	8	BWF BALDIES	HEIFER	1130

Louis & Sue Dechaine of St. Lina AB

One Heifers (only one brand) Bred to Red angus bulls, to start calving April 1st. Bulls went out June 18th - Aug 15th.

PEN	HD#	DESCRIPTION	KIND	WEIGHT	PRICE & BUYER
3-1	10	RED BLAZES	HEIFER	1190	
3-1A	5	RED STAR FACE	HEIFER	1190	
3-3	9	RED BLAZES	HEIFER	1160	
3-3A	6	RED STAR FACE	HEIFER	1160	
3-5	16	DARK SIMM	HEIFER	1220	
3-7	13	DARK SIMM	HEIFER	1200	
3-7A	10	DARK SIMM	HEIFER	1180	
3-9	16	LIGHTER COLOR RED SIMM	HEIFER	1120	
3-11	16	LIGHTER COLOR RED SIMM	HEIFER	1190	
3-13	17	RED ANGUS	HEIFER	1240	
3-15	13	RED ANGUS	HEIFER	1130	
3-15A	12	RED ANGUS	HEIFER	1150	
BP1	6	RWF 1/2 CROSS	HEIFER	1215	
3-2	3	RED STAR FACE	HEIFER	1160	
3-4	4	RWF SIMM X	HEIFER	1180	
3-4A	3	BLACKS	HEIFER	1100	

Larouche Farms LTD of Chauvin AB

Home Raised Simmental X heifers bred to Red Angus bull for 23 days. Bulls out June 21st to July 13th. Full herd health program in spring, 1st shot of Scourgaud and Ivermec on Nov 15th.

PEN	HD#	DESCRIPTION	KIND	WEIGHT	PRICE & BUYER
5-1	3	RED BROCKLES	HEIFER	1310	
5-2	5	RWF TRADITIONALS	HEIFER	1300	
5-3	2	RWF TRADITIONALS	HEIFER	1300	

Ferris Land & Cattle of Marwayne AB

Calving April 2024

PEN	HD#	DESCRIPTION	KIND	WEIGHT	PRICE & BUYER
K-	3	SPECKLES	COW		

Jim Wright of Meadow Lake SK

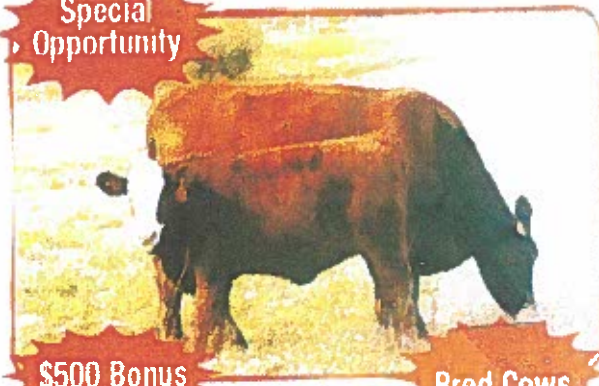
Bred to Red and Black Angus bulls, bulls went out May 15th to July 25th for Feb 21st calving. Heifers had Express FP 5 and fermicon 7 prebreeding. All have been on a Bullseye Mineral Program.

PEN	HD#	DESCRIPTION	KIND	WEIGHT	PRICE & BUYER
I-1	2	BLACK BROCKLES	HEIFER		
I-2	4	BLACK BROCKLES	HEIFER		
I-3	3	RED	HEIFER		
I-3A	1	RED BROCKLES	HEIFER		
I-4	1	RED - 2ND CALVER	COW		
I-5	1	BLACK- 2ND CALVER	COW		
I-6	2	BLACK - 7TH CALVERS	COW		

"Super Sisters"

Bred Heifer And "Special opportunity" cow Sale

Special
Opportunity



\$500 Bonus

Bred Cows



180 BRED
HEIFERS

Bred Purebred Red and Black Angus cows will sell, bred to industry leading Fleck Simmie Bulls.

We are so confident in these solid young cows that we will pay a \$500 premium over market price for every bull calf you sell back to us in the fall.

Bull calves to be delivered to NLS in Lloydminster.

Talk to Mac.

Well bred, consistent uniform half sisters, from two purebred parents. True F-1 crossbreds from our purebred cows and Fleckvieh Simmental and Gelbvieh bulls, the sisters to our industry leading hybrid bulls.

Red and Black Angus X Simmental SUPER BALDIES,
Red and Black Angus X Gelbvieh SUPER GUPPIES,
and Hereford X Simmental H2's.

Commercial Heifers

Bulls out June 25 for 60 Day Exposure
"April Calvers" bred to Red Angus Bulls

Purebred Heifers

Bulls out June 25 for 65 Day Exposure
"April Calvers" bred to Purebred Angus Bulls
(calves can be registered)

Cows

Bulls out July 1
75 Day Exposure
Bred Fleck Semi Bulls

80 PUREBRED HEIFERS



WE HAVEN'T SOLD A PUREBRED HEIFER IN 20 YEARS AND HERE THEY ARE, BRED PUREBREDS, SELLING IN SMALL PACKAGES OR SINGLES. MANY "EXTRA AGE HEIFERS"

Herd Health Program

We maintain a practical, effective herd health and vaccination program for our own and our customer's protection. Calves receive a vaccination for blackleg at two months of age (spring turnout). They receive a second blackleg plus vaccinations for hemophilus and pasteurilla at weaning time (about 5 months of age). Prior to puberty, before reaching a year, they are vaccinated for IBR, PI3, BVD, BRSV with a live virus vaccine and they receive the last booster for blackleg (this should provide life long immunity).

The cowherd receives annual prebreeding vaccinations with a live virus vaccine, generally Bovishield Gold for BVD, IBR, PI3 and BRSV. All cattle are treated with an Ivomec product annually.

ALL SALE FEMALES Ultrasounded Pregnant by Weir Vet Services

Nov. 27, 2023