



BRED COW AND HEIFER SALE - DEC 8TH



Start time: 11 am

EARLY-JANUARY/FEBRUARY		BRED-MARCH/APRIL	LATE- MAY-JUNE	L-LATE - SUMMER	
LOT	Hd	DESCRIPTION	BRED TO	NOTES	PEN #
100 VAN EATON DISPERSAL					
	23	BRED HEIFERS	PUREBRED FLECKBEIH,	HEIFERS DUE JAN 20TH	601, 602
	175	BRED CHAR OR SIMM COWS	CHAROLAIS OR SIMMENTAL BULLS. *SEE ATTACHMENT	COWS DUE FEBRUARY 20TH SEE BOOKLET FOR MORE INFORMATION	604, 606, 608 610, 612, 614 616, 618, 620
107	8	RED/TAN HEIFERS	RED ANGUS	APRIL 1ST	615
106	4	BLK SIMM X	BLK ANGUS	MID MARCH	615
102 BUISSE DISPERSAL					
	20	BRED HEIFERS	SPECKLE PARK BULLS	APRIL 7TH DUE DATE	603, 605
	34	BRED COWS			607, 609, 611
	12	LATE BRED COWS		VACCINATED FOR IBR &	613
	10	L-LATE BRED COWS		BLACK LEG IN PSRING	
LOWENBERGER REDUCTION					
103	41	BRED RED/TAN COWS	CHAROLAIS	MAY	406-412
104	18	BRED RED/TAN COWS		42 DAY EXPOSURE	402, 404

345 BRED COWS AND HEIFERS



VAN EATON FARMS
COMPLETE
HERD DISPERSAL

Thursday,
December 8, 2022

11:00 a.m.

WHITEWOOD LIVESTOCK SERVICES

306-735-2822

whitewoodlivestock.ca

– DECEMBER 8, 2022 –

Welcome to the VAN EATON FARMS Herd Dispersal Sale

The herd that you see on offer today is the cumulative effort of 40 years of selecting, retaining, and purchasing of quality breeding stock.

As a first generation operation, certainly the herd building process evolved from a point of just getting more numbers to a point of maintaining a herd of good producing females which also had some longevity.

We realized that the most cost effective way to achieve this goal was to select better genetics in our herd sires. We strived to purchase sires which would add pounds and length to our calves for market and which would add better quality females for herd retention. We have purchased sires from reputable breeders such as the McTavishes, the Brimners, and the Jacksons for Charolais bulls, and the Switzers and Carsons for full blood Simmental bulls. We purchased sires from these breeders, and others, which were at the top end of the commercial class, and even edging into the purebred class, and it was not uncommon for us to have paid \$10,000.00 or a bit more for the "right" bull.

This process has lead to cows such as Z 53 which was born on the farm, and has raised 9 calves, with a calving date spread of only 14 days difference during those nine years. Cow A 24 was born on the farm and has raised 8 calves with a calving date spread of only 15 days during those eight years. Cow B 88 was born on the farm and has raised 7 calves, with a calving date spread of only 13 days, with the exception of her first calf.

We have made every effort to sort the cows into lots guided by how they are bred. As a blanket statement, the white cows were bred Simmental, along with some of the tan cows, and the tan white face style cows were bred Charolais. The heifers were bred to a KenRay Red Angus bull which we have used on our heifers for the past five years.

As part of our management plan, all calves are treated with Baycox in the first few days of life. This requires that we know the weight of the calves to determine dosage, and as such every calf is weighed at birth. The average weight on calves born to mature cows was up a bit from last year at 105 lbs up from 103 lbs the year before. Calves born to heifers from the KenRay bull averaged 76 lbs on male calves and 72 lbs on female calves. As a note, there were no vet assisted births in 2022.

The heifers were exposed April 15 and should start calving about January 20th, and the cows were exposed May 15 and should start calving about Feb 20th. This would be two weeks later than our normal turn out dates. The bulls remained with the herd until the end of October.

We strived to have our cows calve in February and March with the stragglers in April. The idea was that they would be finished calving prior to seeding. You will see in the attached information that there were a few later births, some of which were the Gervin and Toews cows, which were bred to calve later than ours when they were purchased.

The cows are on the Pfizer vaccine program and are treated with Solmectin. They were pregnancy checked on November 29th by Virden Animal Hospital staff.

Thank you for your interest in our herd, and we wish you all the best with your purchases and continued success in the cattle business !

Sincerely,
The Van Eatons

Most of our cows have a year letter on the ear tag. The odd one which doesn't would be a purchased cow from either the Gervins of Melita sale or the Toews of Cromer sale.

LETTER CODE FOR BEEF CATTLE IDENTIFICATION

X – 2010

Y – 2011

Z – 2012

A – 2013

B – 2014

C – 2015

D - 2016

E - 2017

F - 2018

G - 2019

H - 2020

J - 2021

JDV 43 Clearwater Lexington 73

FULLBLOOD MALE 1301513 CWS7G JANUARY 19, 2019

Full Fleckveih. Lexington is our top performer this year and will certainly pass that along to his offspring. He is smooth made and has an excellent stride to get out and cover your cows in any terrain. His mother was a heifer that caught everyone's attention in the Southern Round Up sale a few years ago and she has not disappointed. Lexington has lots of muscle and middle, traits that will add some pounds and do-ability to your calves.

September 13, Actual Weaning Weight: 980 lbs. January 5 Weight: 1265 lbs.

Brink Ambrose X038

Brink Duke D658

Brink 241M

Anchor D Weiser 24W

Ricochet Clara 519C

Ricochet Whitney 99W

BW: 104. AWW: 843. AYW: 1243

CE: 3.1 BW: 5.5 WW 66.3 YW: 92.7 Milk: 32.6

MCE: 4.2 MWW: 65.8

Brink Amos S621

Brink Clarette S627

Brink Sapp J958

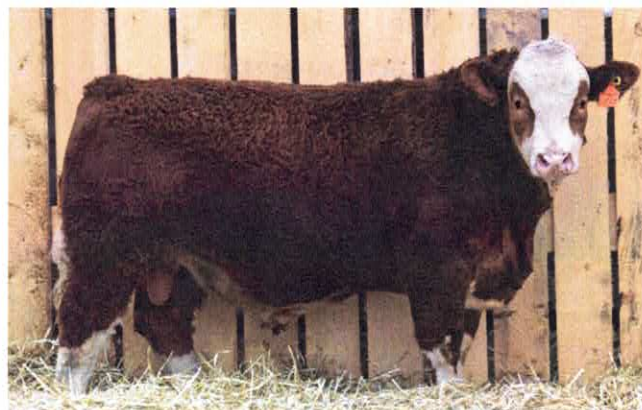
BRG Suzie F628

Bar 5 SA Stride 513P

Rich MC MS Union 24M

Ricochet Samson 607S

Ricochet Takeisha 723T



JDV 44

HBSF 118F Triumph Son

High Bluff Grisham 186G

POLLED PUREBRED PMC772149 HBSF 186G MARCH 27, 2019

Grisham is another bull that follows the Triumph bloodline characteristics: hairy, long, smooth made and very nicely muscled. His dam, HBSF 81C, belongs to the Laura cow family that is known for consistency, youthfulness and longevity.



SC Triumph 2135
SCX Triumph 50B PMC365296
SCX Miss Hilo 128W
Silverstream Geddes G102
High Bluff Laura 81C PFC695223
Rolling D Laura 941W
BW: 95. adjWW: 939.
adjYW: 1488
EPDs: CE: 4.8 BW: -0.2
WW: 64 YW: 110 MILK 13 MTL: 45

JDV 45

High Bluff Triumph 198G

POLLED PUREBRED PMC772158 HBSF 198G APRIL 7, 2019

A 2 year old Triumph 50B son with great muscle shape and presence. We had great success with our Triumph offspring. If you are looking for a bull to cover more cows, add muscle shape, consistency and style to your calves then take a look here. From our embryo program we have a full sister to his dam in the replacement heifer pen. She's a powerful and stylish female that might just top off the heifer pen. She goes back to the great High Bluff Schatzi cow.



SCR TRIUMPH 2135
SCX TRIUMPH 50B PMC365296
SCX MISS HILO 128W

HARVIE JAGER 65J
HIGH BLUFF SCHATZI 141C PEFC717545
HIGHBLUFF SCHATZI 8S

BW: 85. AdjWW: 911. EPDs: CE: 6.0 BW: -0.3
WW: 52 YW: 96 MILK: 14 MTL: 40

JDV 42

High Bluff Fortune 125F

POLLED PUREBRED PMC753053 HBSF 125F FEBRUARY 14, 2018

Check out the yearling weight on Frankie! A pen of steers with his jam and length of spine will be hard to bear. We love what HD has done for us with the bulls we have had for sale for the last 5 years and the females we have in our herd. You don't have to look hard to see that HD females back some of our favourite bulls in this year's sales. HD has also been successful in purebred breeder's herds. Frankie's full brother, Bushwacker, worked successfully at Palmer Charolais in their purebred commercial herd. Watch for her 2020 bull! She has a neat looking Cook calf at side this year.



HBSF Bushwacker 27B - Full Brother

HBSF 20W at 9 years of age



Merit 9809W

SHSH HD 14Y PMC342189

SHSH Madonna 21U

HTA Duramax 642S

High Bluff Natassja 20W FC380615

High Bluff Natassja 120N

BW: 100. AWW:891. AYW:1592
EPDs: -.5 2.3 61 110 26 57

JDV 38 SBSF Electron 28E

FULLBLOOD MALE 1217194 SBSF 28E JANUARY 23, 2017

SBSF 72U has done it again! This cow has produced 5 outstanding bulls, all selling in the Premium Beef Bull Sale. Progeny have sold to K & S Simmentals \$17,000. Cameron Land & Cattle \$10,100 Troy Reynolds \$7,500 and W & H Glass \$5,250. Her only heifer calf was retained in our herd and is producing well for us. Electron is a powerful, heavy muscled, goggle eyed, Full Fleck, Romano x Whistler son. A very well balanced, deep bull that we feel will go on and improve many herds and sire a thick set of calves. Top 4% WW (83.4), top 10% YW (119.0), top 15% Milk (31.8), top 1% MWWT (73.5) and above breed average in many carcass traits. Check this guy out come sale day. He should produce some pretty outstanding calves!

Champs Romano
IPU ROMANO 90X 735012

IPU MS Legend 42P

MFI Whistler 5244

SBSF MS Whistler 72U 701582

SBSF Princess 6L

BW: 102. AdjWW: 840.

CE: 3.6 BW: 6.3 WW 83.4 YW: 119.0 Milk: 31.8

MCE: 4.1 MWWT: 73.5

Smithbilt Molson 21M

Champs Priscilla

Anchor "T" Legend 7H

IPU 23A Bonnie 53M

MFI Whistler 47L

Anchor "T" Emmy 5B

PRL Houston 005H

Bar None Bonnie



JDV 37 SBSF Elton 72E

FULLBLOOD MALE 1217263 SBSF 72E FEBRUARY 17, 2017

Elton is a super stout February bull that is as thick as they come, has piles of capacity and muscle to go with it. He displays lots of depth and spring of rib and has a great rear quarter. Here is a bull that should produce calves that will tip the scales down come weaning time. He had a very impressive 1065 lb weaning weight. His dam, 81X (Vegas daughter), always brings in our heaviest calves come fall. Offspring have sold to Creekside Cattle Co. and Northern Light Simmentals. Top 10% WW (80.7), top 20% YW (112.9), top 4% Milk (34.7), top 45% MCE, top 1% MWWT and is above average in many carcass areas.

Champs Romano
IPU ROMANO 90X 735012
IPU MS Legend 42P
SBSF Vegas 1L
SBSF MS Vegas 81X 740557
SBSF Noreen 18N

BW: 99. AdjWW: 952.
CE: 5.0 BW: 5.1 WW 80.7 YW: 112.9 Milk: 34.7
MCE: 8.1 MWWT: 75.1

Smithbilt Molson 21M
Champs Priscilla
Achor "T" Legend 7H
IPU 23A Bonnie 53M
PRL Houston 005H
Bar None Bonnie
MRL Alero 34K
SBSF Helen 10H



IPU Romano 90X



JDV 47 High Bluff Johnson 134J

HOMO POLLED PMC825389 HBSF 134J FEBRUARY 8, 2021

Be sure to check this guy out in the pen before the sale! He's been a standout since birth. A bull you really have to appreciate for his power, balance and presence. HBSF 84D is quickly becoming a pen favourite. She is a big bodied, good-looking Triumph daughter who is back by some powerful French genetics. She always weans one of the biggest bull calves for the sale. Pretty excited that she had a heifer that should be destined for the replacement pen this year. 84D's full brother is on offer as lot 5. Be sure to check him out! 100K Tested, Sire Verified.



High Bluff
Heraclio 42H
Maternal Brother
of Lot 17



High Bluff
Gabbana 61G
3/4 Sister of
Lot 17

Silverstream Geddes G102
High Bluff Casanova 13C PMC364824
High Bluff Esperence 15Y

SCR Triumph 2135
High Bluff Easy Haida 84D PFC709905
High Bluff Easy Haida 110A

Performance:
BW: 103 lbs AdjWW: 876 lbs AdjYW: 1425 lbs

EPD's:
CED: 2.4 BW: 2.7 WW: 51 YW: 93
M: 17 MTL: 43



High Bluff Easy
Haida 84D
Dam of Lot 17

JDV 46 NAC Fugitive 16J

POLLED FULLBLOOD P1369707 NAC 16J JANUARY 5, 2021

A smooth polled 100% Fleckvieh bull with lots of length and straight top line. He should be an easy calver just like his sire Fugitive. His dam has a perfect udder and also has very good length. Some people say the hardest thing to add to your cowherd is length of body. This guy should really help! Non dilutor.

Kuntz Duramax 12D

Skywest Fugitive

Skywest Betty

NCK Windham 48W

NAC 34C

CJB Tamara 38T

BW: 91 AWW: 800

AYW: 1200

CE: 4.8 BW: 4.7 WW: 76.3

YW: 117.6 Milk: 42

MCE 1.3 MWW: 80.2

Southseven Mr. Adonis 96Z

Kuntz Miss Moses 03X

Rafter 4T Ranger 6Z

Brock XPotential

NCK Renegade 16R

MS Northern Light Lana 7L

DFM Marcus 14M

NAC Renay 40R



VAN EATON FARMS

Cow Herd Info

COW ID	DESCRIPTION	BRED	LIKELY	POSSIBLY	CALVED '22
E 1	Smoke Polled	Simmental	JDV 38	JDV 36	May, 9
H 3	White Polled	Simmental	JDV 37	JDV 40	Jan, 13
E 5	Cream Polled	Simmental	JDV 37	JDV 40	April, 7
A 7	White	Simmental	JDV 40	JDV 37	Feb, 24 twins
E 8	Tan W Face Horned	Charolais	JDV 45	JDV 42	April, 1
E 10	Crn W Face Polled	Simmental	JDV 38	JDV 36	Feb, 15
D 11	Tan White Face	Charolais	JDV 45	JDV 42	April, 2
G 12	Tan Horned	Charolais	JDV 44	JDV 47	Feb, 16
D 17	White	Simmental	JDV 37	JDV 40	Feb, 16
D 18	Tan White Face	Charolais	JDV 45	JDV 42	April, 3
E 20	White Polled	Simmental	JDV 37	JDV 40	Feb, 21
A 21	White Horned	Simmental	JDV 37	JDV 40	April, 12
A 22	White Horned	Simmental	JDV 37	JDV 40	March, 7

VAN EATON FARMS

Cow Herd Info

COW ID	DESCRIPTION	BRED	LIKELY	POSSIBLY	CALVED '22
D 23	Tan	Charolais	JDV 44	JDV 47	Feb, 16
A 24	Dark Tan Horned	Simmental	JDV 36	JDV 38	Feb, 14 twins
G 25	Tan Polled	Charolais	JDV 44	JDV 47	March, 24
E 26	Tan W Face Horned	Charolais	JDV 45	JDV 42	March, 16
H 27	White Polled	Simmental	JDV 37	JDV 40	Jan, 21
H 28	Tan Polled	Charolais	JDV 44	JDV 47	Jan, 21
H 29	White Polled	Simmental	JDV 37	JDV 40	Jan, 29
D 31	Tan White Face	Charolais	JDV 45	JDV 42	March, 16
G 32	White Polled	Simmental	JDV 37	JDV 40	April, 8
E 33	Tan Polled	Charolais	JDV 44	JDV 47	Feb, 25
G 34	White Polled	Simmental	JDV 37	JDV 40	March, 13
A 35	Tan W Face Horned	Simmental	JDV 38	JDV 36	March, 22
A 36	White	Simmental	JDV 37	JDV 40	Feb, 22 twins
E 37	Tan White Face	Charolais	JDV 44	JDV 47	March, 16
E 39	Tan Polled	Charolais	JDV 44	JDV 47	Feb, 18 twins
H 41	White Polled	Simmental	JDV 40	JDV 37	March, 1
H 43	Red	Charolais	JDV 44	JDV 47	Jan, 8
H 45	White Polled	Simmental	JDV 37	JDV 40	Jan, 14
Z 46	White Polled	Simmental	JDV 40	JDV 37	Feb, 28
E 47	Tan W Face Horned	Charolais	JDV 45	JDV 42	March, 28 twins
C 48	Tan	Charolais	JDV 44	JDV 47	Feb, 8
E 49	Red Polled	Charolais	JDV 45	JDV 42	Feb, 14
B 50	Tan	Charolais	JDV 44	JDV 47	Feb, 16
C 52	Tan White Face	Simmental	JDV 38	JDV 43	Feb, 23
Z 53	Tan White Face Horned	Simmental	JDV 36	JDV 43	Feb, 12
B 54	White	Simmental	JDV 40	JDV 37	March, 13
E 55	White	Simmental	JDV 40	JDV 37	March, 9
Z 56	Tan Polled	Simmental	JDV 36	JDV 38	March, 29
H 57	Tan Polled	Charolais	JDV 45	JDV 42	Jan, 12
D 58	Tan White Face	Charolais	JDV 42	JDV 45	April, 8
H 60	White Polled	Simmental	JDV 37	JDV 40	Feb, 4
D 61	Tan	Charolais	JDV 45	JDV 42	Feb, 4 twins
Y 62	Tan	Simmental	JDV 36	JDV 38	Feb, 15
D 63	White Polled	Simmental	JDV 43	JDV 36	April, 10
C 65	Tan White Face	Simmental	JDV 36	JDV 38	Feb, 11 twins
G 67	Tan W Face Polled	Charolais	JDV 44	JDV 47	Feb, 24
E 69	Tan White Face	Charolais	JDV 45	JDV 42	Feb, 21
D 70	White	Simmental	JDV 38	JDV 36	Feb, 17
E 71	Tan Polled	Charolais	JDV 47	JDV 44	April, 15
E 73	White	Simmental	JDV 40	JDV 37	May, 2
D 74	Red White Face	Simmental	JDV 38	JDV 36	Feb, 21
G 75	Red Polled	Charolais	JDV 44	JDV 47	Feb, 11
D 76	Tan Polled	Charolais	JDV 42	JDV 44	March, 25

VAN EATON FARMS

Cow Herd Info

COW ID	DESCRIPTION	BRED	LIKELY	POSSIBLY	CALVED '22
D 77	White Polled	Simmental	JDV 37	JDV 40	Feb, 19
X 78	White	Simmental	JDV 36	JDV 38	March, 3
E 79	White	Simmental	JDV 40	JDV 37	March, 1
B 80	Tan	Charolais	JDV 44	JDV 47	Feb, 13
H 82	Tan Polled	Charolais	JDV 45	JDV 42	Jan, 26
B 83	Tan	Charolais	JDV 47	JDV 44	March, 1
B 84	Tan	Charolais	JDV 47	JDV 44	March, 20
G 85	Tan Polled	Charolais	JDV 44	JDV 47	Feb, 10
H 86	Tan W Face Polled	Charolais	JDV 45	JDV 42	Feb, 22
H 87	Red Polled	Charolais	JDV 45	JDV 42	Feb, 23
B 88	Tan White Face	Charolais	JDV 44	JDV 47	Feb, 19
G 89	Tan W Face Polled	Charolais	JDV 44	JDV 47	March, 4
E 90	Red White Face	Charolais	JDV 47	JDV 44	April, 2
G 92	Cream Polled	Simmental	JDV 37	JDV 40	Feb, 14
A 93	Dark Tan	Simmental	JDV 38	JDV 36	Feb, 22
G 94	White Horned	Simmental	JDV 37	JDV 40	Feb, 16
H 95	Tan W Face Polled	Charolais	JDV 42	JDV 45	April, 16
H 97	White Polled	Simmental	JDV 36	JDV 38	April, 10
B 98	White	Simmental	JDV 40	JDV 37	March, 11
C 99	Tan	Charolais	JDV 45	JDV 42	Feb, 21
G 100	White Polled	Simmental	JDV 37	JDV 40	Feb, 25
Y 101	Tan W Face Horned	Simmental	JDV 36	JDV 38	March, 24
E 102	Red White Face	Charolais	JDV 45	JDV 42	Feb, 17
D 103	Tan	Simmental	JDV 36	JDV 38	March, 28
A 104	Tan	Simmental	JDV 38	JDV 43	April, 12
B 105	White	Simmental	JDV 38	JDV 36	March, 19
C 106	Tan	Simmental	JDV 38	JDV 36	March, 15
D 107	Tan W Face Horned	Simmental	JDV 38	JDV 36	March, 21
Y 108	Tan White Face	Simmental	JDV 36	JDV 38	Feb, 24
C 109	Red White Face	Charolais	JDV 44	JDV 47	Feb, 15
A 110	White	Simmental	JDV 36	JDV 38	Feb, 22
D 112	Tan	Charolais	JDV 44	JDV 47	Feb, 11
E 114	Tan	Simmental	JDV 38	JDV 43	March, 21
H 119	White Polled	Simmental	JDV 38	JDV 36	Jan, 28
G 120	Tan White Face	Simmental	JDV 37	JDV 40	March, 13
G 123	Tan Polled	Charolais	JDV 44	JDV 47	March, 5
G 124	White Polled	Simmental	JDV 37	JDV 40	Feb, 26
H 126	Tan Polled	Charolais	JDV 45	JDV 42	Jan, 22
Z 127	White Polled	Simmental	JDV 36	JDV 38	March, 5
H 128	White Polled	Simmental	JDV 38	JDV 36	Feb, 11
E 132	Tan	Simmental	JDV 38	JDV 36	March, 28
E 133	Tan White Face	Simmental	JDV 38	JDV 36	April, 21
C 134	Tan White Face	Simmental	JDV 36	JDV 43	Feb, 13

VAN EATON FARMS

Cow Herd Info

COW ID	DESCRIPTION	BRED	LIKELY	POSSIBLY	CALVED '22
C 135	Tan White Face	Charolais	JDV 47	JDV 44	Feb, 19
H 136	Tan Polled	Charolais	JDV 44	JDV 47	Jan, 13
H 137	Cream Polled	Simmental	JDV 38	JDV 36	Jan, 10
G 138	Red Horned	Charolais	JDV 44	JDV 47	Feb, 25
H 139	Tan Polled	Charolais	JDV 44	JDV 47	Jan, 17
H 140	Tan Polled	Charolais	JDV 44	JDV 47	Jan, 13
D 141	Tan	Simmental	JDV 38	JDV 36	Feb, 17
H 142	White Polled	Simmental	JDV 37	JDV 40	Jan, 28
H 143	Tan	Simmental	JDV 38	JDV 36	Feb, 11
A 148	White	Simmental	JDV 37	JDV 40	Feb, 23
G 152	Tan Polled	Charolais	JDV 42	JDV 45	March, 14
G 153	White Horned	Simmental	JDV 37	JDV 40	Feb, 25
155	Cream	Simmental	JDV 38	JDV 43	Feb, 23
E 156	White	Simmental	JDV 37	JDV 40	Feb, 17
158	Tan	Simmental	JDV 36	JDV 38	Feb, 13 twins
159	White	Simmental	JDV 38	JDV 43	March, 23
C 160	Tan White Face	Simmental	JDV 38	JDV 36	March, 21
C 162	Tan White Face	Simmental	JDV 36	JDV 38	March, 16
B 163	Tan	Charolais	JDV 44	JDV 47	Feb, 18
168	Tan	Simmental	JDV 38	JDV 43	Feb, 25
G 169	Tan W Face Polled	Charolais	JDV 42	JDV 45	April, 1
C 170	Cream	Simmental	JDV 40	JDV 37	Feb, 24 twins
B 172	Tan	Simmental	JDV 38	JDV 36	Feb, 27
G 174	Tan Polled	Simmental	JDV 36	JDV 43	March, 28
B 175	Tan	Simmental	JDV 36	JDV 38	April, 7
G 176	Tan W Face Polled	Charolais	JDV 42	JDV 45	March, 18
G 177	Tan W Face Horned	Simmental	JDV 36	JDV 38	March, 24
C 180	White Polled	Simmental	JDV 40	JDV 37	March, 2
F 183	Tan Polled	Simmental	JDV 38	JDV 36	Feb, 28
C 184	Tan White Face	Charolais	JDV 44	JDV 47	March, 1
F 185	Tan W Face Polled	Charolais	JDV 44	JDV 47	Feb, 24
B 187	White	Simmental	JDV 37	JDV 40	March, 5
188	Tan Brkl Face	Simmental	JDV 38	JDV 36	Feb, 19
B 189	Red White Face	Simmental	JDV 36	JDV 43	April, 2
F 191	Cream Horned	Simmental	JDV 36	JDV 38	March, 20
B 192	Tan White Face	Charolais	JDV 42	JDV 45	April, 10
F 193	Red Horned	Simmental	JDV 36	JDV 38	March, 27
F 194	Tan Horned	Charolais	JDV 42	JDV 45	April, 10
B 195	Red White Face	Simmental	JDV 38	JDV 36	March, 8
F 196	Tan W Face Polled	Charolais	JDV 45	JDV 42	Feb, 11
F 199	Tan W Face Polled	Charolais	JDV 45	JDV 42	March, 18
F 200	White Polled	Simmental	JDV 38	JDV 36	Feb, 23
F 204	White Polled	Simmental	JDV 37	JDV 40	Feb, 13 twins

VAN EATON FARMS

Cow Herd Info

COW ID	DESCRIPTION	BRED	LIKELY	POSSIBLY	CALVED '22
F 210	Red Polled	Charolais	JDV 44	JDV 47	Feb, 24
F 211	Red W Face Polled	Charolais	JDV 44	JDV 47	Feb, 22
F 212	Tan Horned	Charolais	JDV 45	JDV 42	March, 14
E 214	Tan White Face	Simmental	JDV 36	JDV 43	March, 22
G 215	Tan Polled	Simmental	JDV 36	JDV 38	March, 20
F 216	Tan Polled	Charolais	JDV 42	JDV 45	March, 27
G 219	White Polled	Simmental	JDV 37	JDV 40	Feb, 16
F 220	Tan Horned	Charolais	JDV 42	JDV 45	March, 9
F 222	Tan Horned	Charolais	JDV 44	JDV 47	Feb, 20
F 223	White Polled	Simmental	JDV 40	JDV 37	March, 2
F 224	White Polled	Simmental	JDV 37	JDV 40	Feb, 19
F 225	White Polled	Simmental	JDV 40	JDV 37	May, 10
F 227	Tan Polled	Simmental	JDV 36	JDV 38	March, 28
F 228	Red Horned	Simmental	JDV 38	JDV 36	Feb, 12
G 229	Tan W Face Polled	Charolais	JDV 42	JDV 45	March, 24
230	Cream	Simmental	JDV 38	JDV 36	Feb, 23
G 231	Tan W Face Polled	Charolais	JDV 42	JDV 45	March, 11
F 232	Tan	Simmental	JDV 36	JDV 43	March, 25
F 233	Tan	Simmental	JDV 36	JDV 43	March, 17
F 234	Tan White Face	Simmental	JDV 38	JDV 36	March, 24
F 235	Tan	Simmental	JDV 43	JDV 38	April, 1
F 237	Tan White Face	Simmental	JDV 43	JDV 36	April, 15
F 238	Tan	Simmental	JDV 36	JDV 38	March, 24
F 240	Tan	Simmental	JDV 36	JDV 38	April, 27
G 242	Tan	Simmental	JDV 38	JDV 43	March, 1
G 243	Tan	Simmental	JDV 36	JDV 38	March, 27
G 244	Tan	Simmental	JDV 43	JDV 36	April, 25
G 245	Tan White Face	Simmental	JDV 38	JDV 36	April, 2
G 246	Tan White Face	Simmental	JDV 38	JDV 36	April, 2
G 247	Tan	Simmental	JDV 36	JDV 38	April, 1
G 248	Tan	Simmental	JDV 36	JDV 38	April, 7
A 267	Black	Simmental	JDV 36	JDV 38	April, 7
A 273	Tan	Simmental	JDV 38	JDV 43	March, 14
C 301	Tan White Face	Charolais	JDV 44	JDV 47	March, 2
H 302	White Polled	Simmental	JDV 38	JDV 36	Jan, 25
X 407	White	Simmental	JDV 36	JDV 43	April, 13

VAN EATON FARMS Testimonials

For many years now, from the auction block, I've had "the best seat in the house" to observe Van Eaton Farms purchasing top quality bulls. Undoubtedly the fastest and most effective way to improve a cowherd is to utilize the best bulls you can. This theory has been used very seriously by John and his family and the proof will be obvious after viewing this cowherd and more importantly by analyzing their productivity. The opportunity that exists at the Van Eaton Farms Cowherd Dispersal is not merely just to buy cows, but an investment of buying into a proven program. Additionally, this is a great agricultural family who are responsible stewards of the land, we wish you all the best in your life after cows.

Jaymes E. (Jay) Good
TRANSCON LIVESTOCK CORP.



I have known and seen John buy bulls for many years. He has always been a discriminating buyer and has always bought some of the top bulls in the sales. The prices he has paid are higher than most want to invest in herd bulls, but John's philosophy has been that the good ones don't cost, they pay. The added pounds of weaned calf, the premium prices and the daughters that go into improving the herd make it all worthwhile. Take advance of the quality herd he has developed and improve your cowherd. Buy with confidence.

Helge By
- CHAROLAIS BANNER